

EASTMAN *Micro Fog* *Model 627MF/629MF* *Instruction and Parts List*

Eastman's Micro-Fog model straight knife was specially designed by Eastman's engineering group to eliminate fusing of synthetic materials. The exclusive Micro Fog and a 90-120 PSI compressed air hose sends a mist of coolant/lubricant behind the knife and out through special slotted wave blades to penetrate every layer of cloth and eliminate the conditions that cause fusing.

OPERATING INSTRUCTIONS

Before turning the machine on, be sure air hose equipped with 90-120 PSI is connected properly to lubricator. Turn on machine and adjust dial (A) for desired lubrication. The amount of lubrication will vary depending on material. The operator should first experiment with the material for best results. If excess heat builds up or fusion of material appears, increase the flow of coolant/lubrication.

CAUTION: The Micro Fog creates a mist atmosphere. Eye protection and proper ventilation must be provided for safe and proper use of equipment.

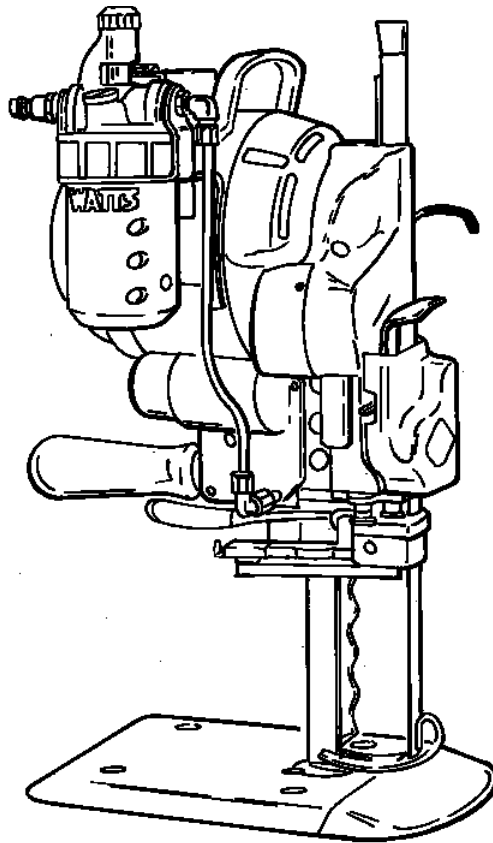
LUBRICATION

Take machine out of lay. With attachment plug and air hose disconnected, remove filler plug (B) and add ONLY GENUINE Eastman Micro Fog Lubricant as required. Replace filler plug.

NOTICE: The Eastman Machine Co. does not warrant this Micro Fog Lubricant and disclaims all liability for any damage that may occur through its use.

Care of Machine

Use air hose or bellows with proper eye shields and blow



synthetic or plastic out of motor and sharpener twice a week. Remove the cover over cam. Clean and wipe off screw mechanism in sharpener once a week. Remove knife and clean knife slides with slot cleaner at least once a day. Clean and dry machine after any usage. To prevent undue accumulation, do not oil plate rollers. If rollers stick, remove from plate and wash in cleaning solvent.

Supplement to Eastman Blue Streak II Instruction Book and Parts List. All Instructions and Safety Warnings contained in the Blue Streak II Manual must be read and followed. Only instructions and parts special to the Eastman Micro Fog Option are contained in this booklet and referral to the Blue Streak II Book must be made.

Eastmanmachine
COMPANY

779 Washington St., Buffalo, N.Y. 14203 U.S.A. (716)856-2200 Telex 4432018 Cable EMCO BUF Fax (716)856-1140
Manufacturers of Eastman Cloth Cutting and CRA Cloth Spreading Machines

Illustrated Parts list

NOTE: Please specify model and serial number of machine when ordering parts. Item numbers are for reference only. Please specify part number when ordering replacement parts.

ITEM	PART NO.	DESCRIPTION	QTY.
1	54C4-45	Fitting, Micro Fog	1
2	209C1-0	Band, Neoprene	2
3	671C1-10	Lubricator, Micro Fog	1
4	62C16-259	Bracket Lubricator	1
5	300C15-2	Screw, Round Head #10-32 x 1/4	2
6	12C1-20	Washer, Lock #10	2
7	300C10-4	Screw, Round Head #6-32 x 3/8	2
8	79C12-231	Plate, Oil Device (629MF Only)	1
9	79C12-250	Plate, Oil Device (627MF Only)	1
10	21C10-2	Bushing	1
11	146C1-13	Elbow	2
12	73C7-163	Tub Lubricator	1
13	29C6-133	Adaptor	1
14	528C1-112	Standard 6", Micro Fog	1
15	20C13-96	Screw, Standard to Bearing (Ref. Only)	1
16	24C4	Plate Bolt (Ref. Only)	1
17	12C15-77	Washer	1
18	80C6-47	6" Knife, High Speed Grooved	1
19	4C2-2	Plate Nut Bolt	1
20	73C7-118	Hose, 25ft. (Not Shown)	1
21	54C4-46	Hose Fitting, Male (Not Shown)	1
22	75C4-0	Socket, Male (Not Shown)	1
23	75C4-1	Socket, Female (Not Shown)	1

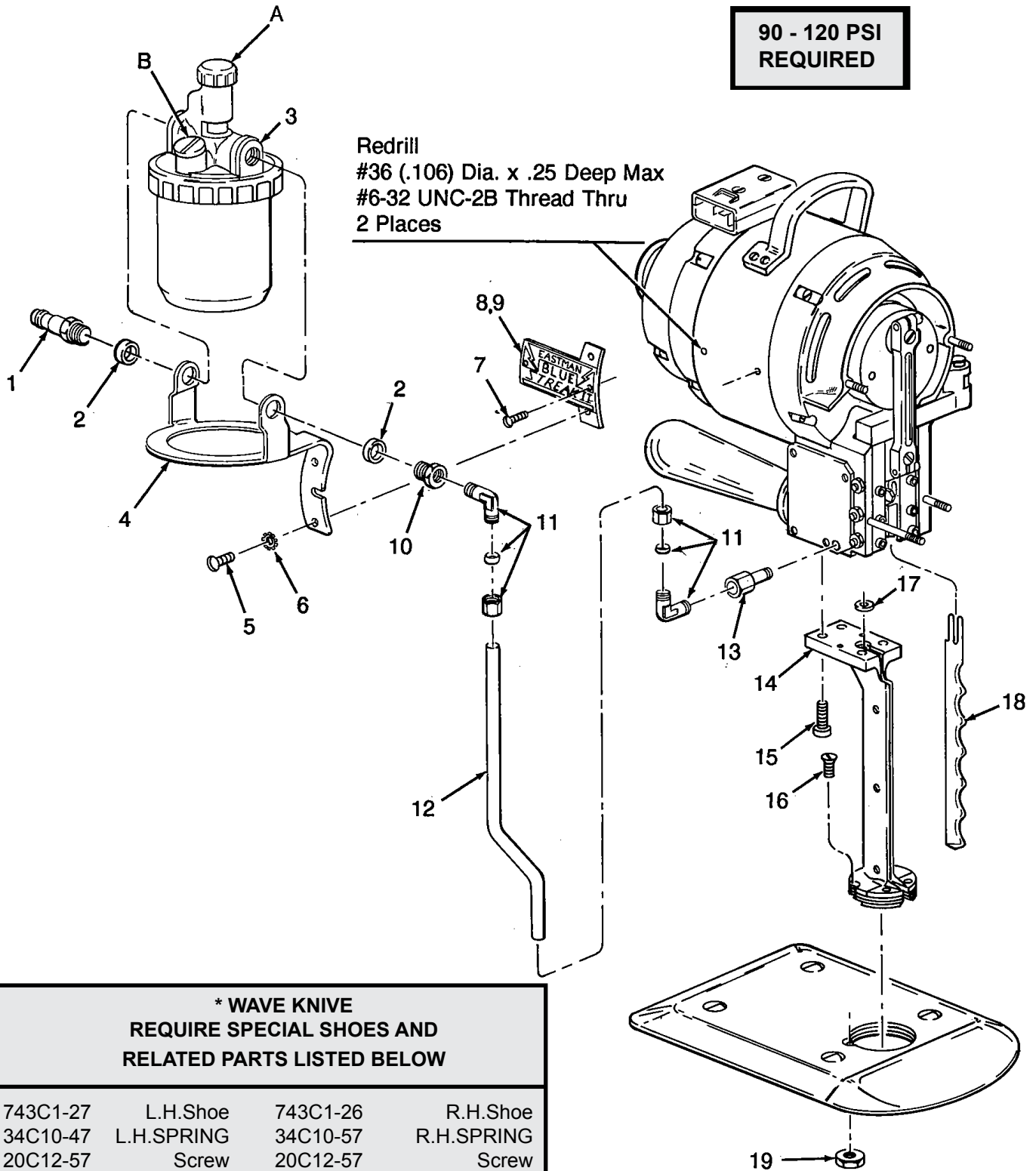
GENUINE EASTMAN Micro Fog Lubricant

242C4-0	-	1 Quart
242C4-1	-	1 Gallon
242C4-2	-	5 Gallon
242C4-3	-	55 Gallon

GENUINE EASTMAN Lubricator Repair Kits

820C2-6	-	Needle Valve Repair Kit
820C1-90	-	Sight Dome Repair Kit
820C2-8	-	Bowl Replacement Kit

**90 - 120 PSI
REQUIRED**



*

Refer to The Blue Streak II catalog for illustration

**Eastmanmachine
COMPANY**

EVERYTHING FOR THE CUTTING ROOM
FOR FURTHER INFORMATION:

Eastman Machine Company: Cloth cutting machines

CRA: Cloth spreading machines

EASI: Automated cutting and spreading systems

Eastman Machine Trading Corp: Cutting room accessories

Eastman Export: For the overseas market

Guarantee

We guarantee our machines for six months from date of invoice against defective parts and workmanship and will repair or replace any machine that proves defective from these causes when returned to us, carrying charges prepaid. This guarantee does not include making good for damages caused by misuse, neglect or normal wear; and is void if other than genuine EASTMAN knives, belts, emery wheels and parts are used in the machine.

Eastmanmachine
COMPANY

779 Washington St., Buffalo, N.Y. 14203 U.S.A. (716)856-2200 Telex 4432018 Cable EMCO BUF Fax (716)856-1140
Manufacturers of Eastman Cloth Cutting and CRA Cloth Spreading Machines